

INSTRUMENT APPROACH - ICAO

3226

090°270°

3333

MSA 25NM NDB(L) EGT

3126

090°270°

2626

MSA 7NM NDB(L) EGT

APP 123.625

EGLINTON APPROACH

AD ELEVATION 23

TWR 134.155

EGLINTON TOWER

THR ELEVATION 11

ATIS 119.380

EGLINTON INFORMATION

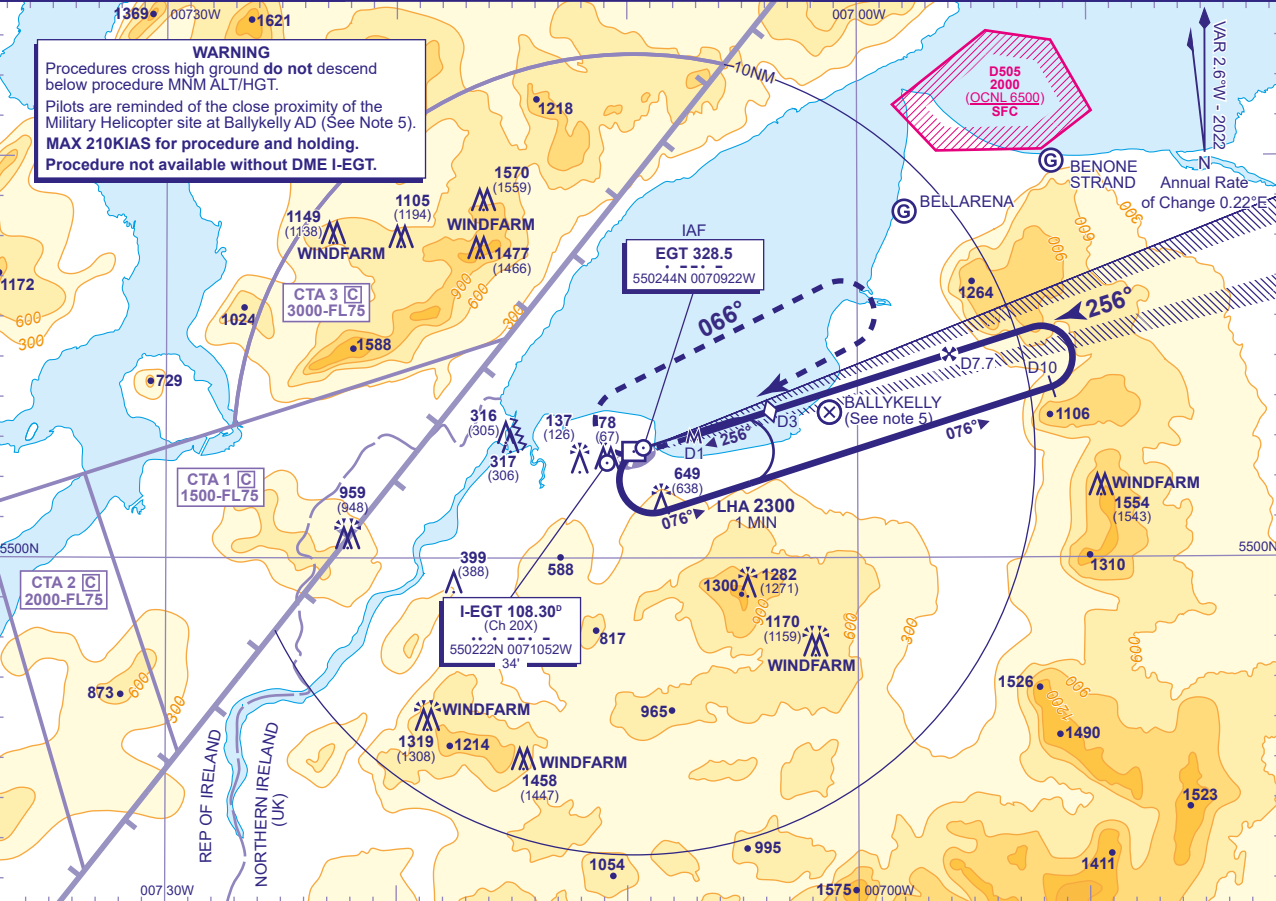
OBSTACLE ELEVATION 1570 AMSL (1559) (ABOVE THR)

BEARINGS ARE MAGNETIC

TRANSITION ALTITUDE 3000

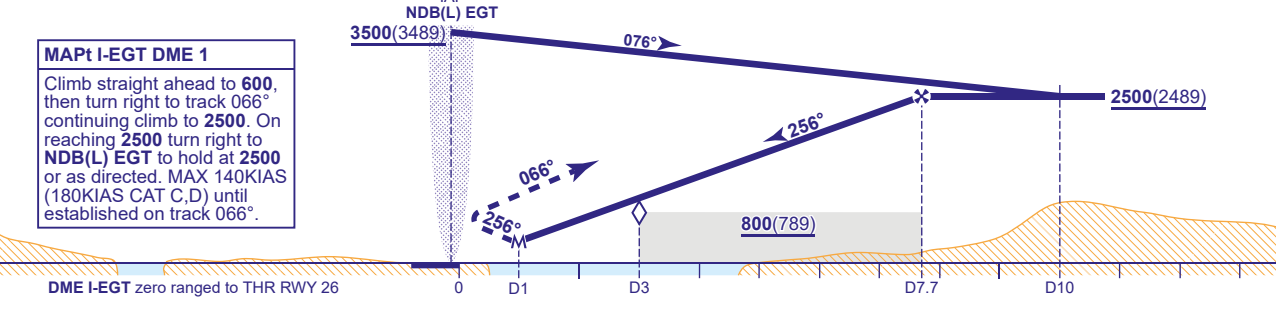
LOC/DME/NDB(L) RWY 26

(ACFT CAT A,B,C,D)



RECOMMENDED PROFILE Gradient 5.2%, 318FT/NM							
DME I-EGT	7	6	5	4	3 (SDF)	2	1
ALT(HGT)	2290(2279)	1970(1959)	1650(1639)	1330(1319)	1020(1009)	700(689)	380(369)

Arrival not below 3500.



Aircraft Category		A	B	C	D	Rate of descent	G/S KT	160	140	120	100	80
OCA (OCH)	Procedure	380(369)	380(369)	440(429)	440(429)		FT/MIN	850	740	640	530	420
VM(C)OCA (OCH AAL)	Total Area	950(927)	950(927)	1710(1687)	1710(1687)							
	North of RWY 08/26	420(397)	520(497)	720(697)	730(707)							

NOTE 1 Lowest altitude to commence procedure from hold is 2500.
2 DME not usable below 3500 between 140° and 185° due to terrain effects.
3 Seasonal bird migration may be a hazard to aircraft.
4 Approach lights to RWY 26 are over water and reflections are possible.
5 Pilots are reminded of the close proximity of disused airfield Ballykelly, 5NM east of Londonderry. Ballykelly AD has similar RWY directions and pattern to Londonderry. Pilots of aircraft en-route and in the circuit at Londonderry should positively identify Londonderry/Eglinton before committing their aircraft to land.